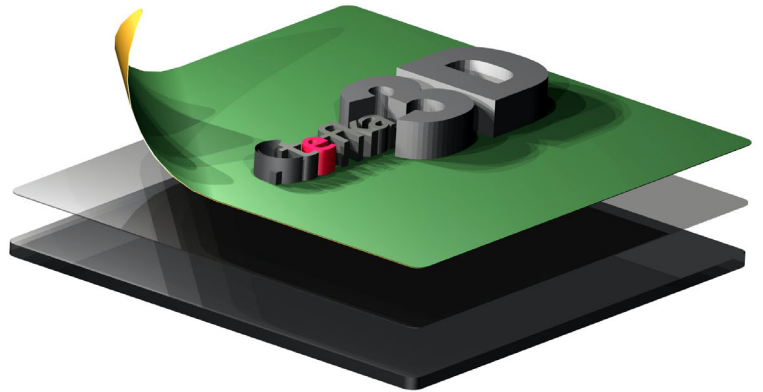
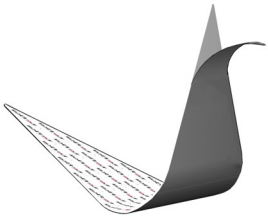


tefka3D exchange pad-system

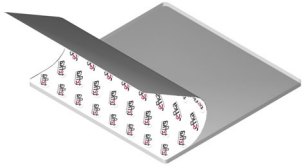


application notes / recommendation for handling



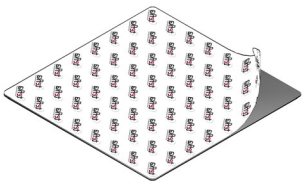
1. 1. Apply the adhesive to the buildplate

- Remove the buildplate adhesive (transparent) from the packaging
- Ensure that the surface is free of dust and grease (clean if necessary)
- Remove the protective foil on clear side
- Apply the exposed adhesive layer bubble-free to the buildplate (begin on the edge of the buildplate and press the adhesive to the plate, bit by bit, with a soft cloth)
- Remove the remaining protective foil (tefka foil).



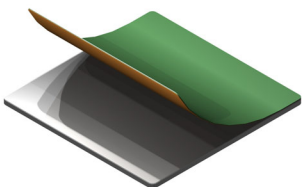
2. Prepare tefka3D

- Apply the textured side of the tefka3D exchange pad (light-brown) bubble-free to the buildplate adhesive. (If the positioning of the pad isn't optimal, simply remove and reapply the pad)



3. Bed leveling

- Depending on the leveling method used, utilize a protective foil if needed (pay attention to the protective-foils thickness clear foil 0,06mm)

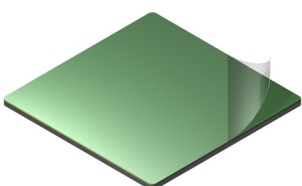


4. Printing process

- Remove the protective foil of the tefka3D exchange pad (green side) before printing
- Keep the foil in a safe place, to reapply it to the pad after use
- No special printer settings are necessary, tefka3D works with the usual settings

5. Detachment of printed parts

- Carefully remove the tefka3D pad from the print bed
- If the part had a large supporting surface, the adhesion may be quite strong
- Gently detach the printed part (if need be with consistent pressure) from the tefka3D exchange pad
- Bend the pad slightly (Do not fold it) / Carefully remove the printed part



- Bend slightly (Do not kink) / Carefully remove the printed part
- wear nitrile gloves if necessary / rinse off with hot water